

DECEMBER 2022
ISSUE 07

Community Newsletter



Partners in AUTISM

FAMILY OWNED • FAMILY FOCUSED



A Word from the Owners

It's the most wonderful time of the year!

We are filled with gratitude to our dedicated staff for shining bright every day as they support our clients, to our clients and their families for entrusting us with their care, and to our community for embracing us.

We hope that this holiday season brings you joy and cherished time with loved ones. We look forward to 2023 with the addition of a new location, the expansion of our services, and most importantly more days to offer positive change and support to our clients and their families.

- **Tommy Guest and Camile Voglewede**

In this issue...

New Location Purchased - pg. 2


Costume Fun - pg. 3

Disability Employment Awareness - pg. 4

PAC news and Preferred Caregivers - pg. 5

Coats for the Community - pg. 7

Upcoming Events - pg. 8


 +260-420-9332

 Contact@PartnersinAutism.com

 Northcrest Location: 601 Nobel Dr.
Fort Wayne, IN 46825

 www.PartnersinAutism.com

 @partnersinautism

 Lake Location: 3030 Lake Ave. Ste 20
Fort Wayne, IN 46805

NEW LOCATION PURCHASED

Expanding
ABA Spaces



We are thrilled to announce that we have purchased a new building for the growth of our ABA Services! The location is in central Fort Wayne close to our Northcrest location. Still remaining faithfully local, we are excited to be able to increase our ABA capacity as we continue to serve our community.

We will be customizing the layout and quality of our facility as we already do at our Northcrest location. Planned construction at the new location will integrate areas for clients to practice life skills - especially important for our older clients. This will allow us to apply naturalized teaching to a wide range of environments and tasks. Once renovations are complete, we will be able to match our ABA clients with the location that best suits their programs and skill sets.

We will announce more detailed information, including the specific location, in the coming months, so stay tuned and keep an eye on our facebook page!

What Makes a Good ABA Environment?

Our kids learn skills best when the spaces they are in reflect the spaces they will need to use those skills.

We shape areas within our clinics to replicate home settings by having...

- living rooms
- full bathrooms
- individual client rooms
- laundry rooms
- full kitchens

We also shape our clinics to include school settings by having...

- classrooms
- art areas
- sensory areas
- gross motor rooms
- a nature space

These areas help learning flow naturally from our clinic out into the world.



SWEET TREATS AND CREATIVE COSTUMES!

Our first annual Trunk-or-Treat was a huge success! We welcomed over 200 families on a sunny Sunday with 15 trunks filled to the brim with decorations, treats, and smiles.

We had a blast hanging out with each other, meeting new people, and seeing everyone's creativity shine. We're already pumped for next year and have been thinking up ways to make it even bigger and better with more activities for the whole family.

Thanks to everyone who volunteered their time to serve the families in our community through this fun event!



Congratulations to Amanda Herald, her sister, and friend for best costume as the Hocus Pocus sisters! Congratulations to Erin Brazel and her mom for best trunk display as a Hogwarts common room!



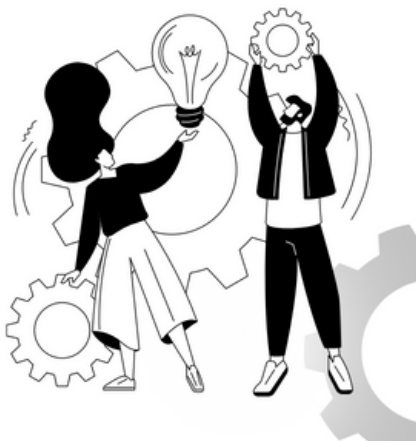
Office Trick-or-Treat

Trick-or-Treating integrates multiple skills sets. To help our kids practice those skills (and as an excuse for more costume fun) we held an office trick-or-treat for our ABA kids. It's always great when staff from our different services can get together!



EMPLOYMENT TO ENRICH ALL

Reflection on
Oct #NDEAM



Every person should have the opportunity to explore and acquire jobs that fit their skills and interests. When the doors to this opportunity are open to individuals with disabilities, it not only benefits the individual but also enriches the community around them.

Our employment specialists open the doors to opportunity by learning about each individual's abilities and interests and then providing structure and guidance for refining those abilities. As skills become talents, our employment specialists connect each individual to workplace opportunities, always checking in with the individual to ensure a good fit.

Part of that good fit is equipping companies with training to support individuals with different abilities. Many companies we work with would like this type of diversity training but have never had an opportunity to obtain it. Our employment specialists assist with diversity training and help employers shape a more inclusive environment for all individuals.

When an individual is employed in the community, they are able to achieve greater independence, build wealth, and develop robust self-esteem. The community in turn benefits from their shared talents, perspectives, and insights.

Benefit Analysis

We empower our clients and families to pursue their own goals. Achieving the goal of employment can impact the State and federal benefits an individual receives.

That's why we have on-site Benefit Specialists ready to help clients and families navigate these financial considerations. Our Benefit Specialists create Benefit Information Network (BIN) plans specific to each client's situation. More and more of our clients are taking advantage of their great tool.

Interested in seeing how our Benefit Specialists can serve you? Contact Elizabeth@PartnersinAutism.com



CREATIVE YOUTH ON STAGE

Creativity thrives on diversity - diversity of experiences, perspectives, and abilities.

Some of our young PAC clients will be using their creativity on stage over the next several months. They, along with other youth, will perform Aesop's Fables in an Audiences Unlimited and Fort Wayne Youtheater production.

Stories of crows and foxes will spring to life through the work of neurodiverse youth. Creativity, understanding, and confidence will also spring to life through the youths' time together. We are excited for the things our kids will learn, as well as the things their peers will learn from them. More information can be found at <https://www.fortwayneyoutheatre.org/aesops-fables>

FUNDING FOR CARE YOU GIVE

Did you know: A PAC Preferred Caregiver is a DSP who provides PAC services to someone they already know and love. By equipping an existing relationship with specialized training, Preferred Caregivers provide person-centered care and support individuals in daily living activities.

Interested in being paid for the support you currently give to a loved one? Contact Megan.P@PartnersinAutism.com for information about becoming a preferred caregiver!



New PAC Social Groups - Coming Soon

We are working to develop a variety of social groups to bring together people with similar interests. Currently, we are surveying our clients to gauge their interest in everything from gardening to video games, bowling to book clubs, cooking to cryptids. If you are a current or waitlisted client for any of our services and would like to be included in our survey, please email Mariah@PartnersinAutism.com. Look for more info in our March newsletter as we use client feedback to make these groups a reality.

New Staff
ABA



ABA Behavior Technicians: Saige, Jade, Maddie, Tysen, Erin, Macy, Amiah



ALWAYS GROWING



Hiring for

Full Time - Fort Wayne

BCBA



APPLY

PartnersinAutism.com

*Sign-on
bonus and
competitive
pay*

EXPERIENCE THE DIFFERENCE OF FAMILY OWNED

- Collaborative support with case loads
- Direct, meaningful connections with clients and families

QUALIFICATIONS

- Master's Degree in Applied Behavior Analysis
- Certified with the BACB

Want to earn a BCBA certification on the job? Learn about our Program Coordinator position and the supportive benefits we offer. Contact Courtne@PartnersinAutism.com

COMMUNITY



PARTNERING WITH MARTHA'S CLOSET

Service Happens When Skills Grow

Our Employment Services partners with Martha's Closet/Career Closet, a local referral based program that provides clothing to those in need. Our clients who are interested in retail jobs are able to practice job skills by washing, drying, folding, sorting, and packing items that are donated to Martha's Closet. This connection not only gives our clients an opportunity to work on their employable skills and gain greater independence, but also allows our clients' hard work to have a true impact on the rest of our community.

During November, we hosted a coat drive for Martha's Closet. It was delightful to watch so many lovely, cozy coats come in. Thanks to Martha's Closet/Career Closet for their great collaboration. And thanks to all of you for helping build skills while also supporting others in need. Kindness really does have a wide - and warm - reach!

OUR NEWEST DIRECTOR

Director Spotlight

Clinical
Director -
Northcrest:
Olivia Dunten



Olivia brings together a detail oriented focus and a shining, open attitude. The Clinical Director is responsible for overseeing communication with parents of ABA clients, scheduling, and other clinic specific needs. She started with us as a Behavior Technician and had this to say about her experience here as a tech and as a director:

"Since I was young I have always wanted a career where I could make a difference in people's lives. Working with kids is not only extremely rewarding but it is also a creative outlet and a place where I can push myself constantly to be better, because I am now a full time role model and want to make a strong impact on client and family lives. I love coming up with new ways to support clients, families, and staff all at the same time while making the experience of ABA as fun and rewarding as possible."

Olivia is currently working on a Bachelor's in Psychology from Purdue Global and plans to enter a Master's program after completion

Upcoming Events

Spirit Day: Wear Icy Blue Day - Dec 23

PAC Client Game Night - Dec 16
Registration required in advance to Mariah@PartnersinAutism.com

Adult Aspergers Support Group
2nd Monday monthly
6:30-8:00pm at Partners in Autism

Allen County Autism Caregiver Support Group
2nd Thursday monthly
6:30-8:00pm at Partners in Autism and through zoom. For zoom link, email info@myautismally.org

Spectrum Sisters Support Group
2nd Tuesday monthly
6:30-8:00pm through zoom. For zoom link, email info@myautismally.org